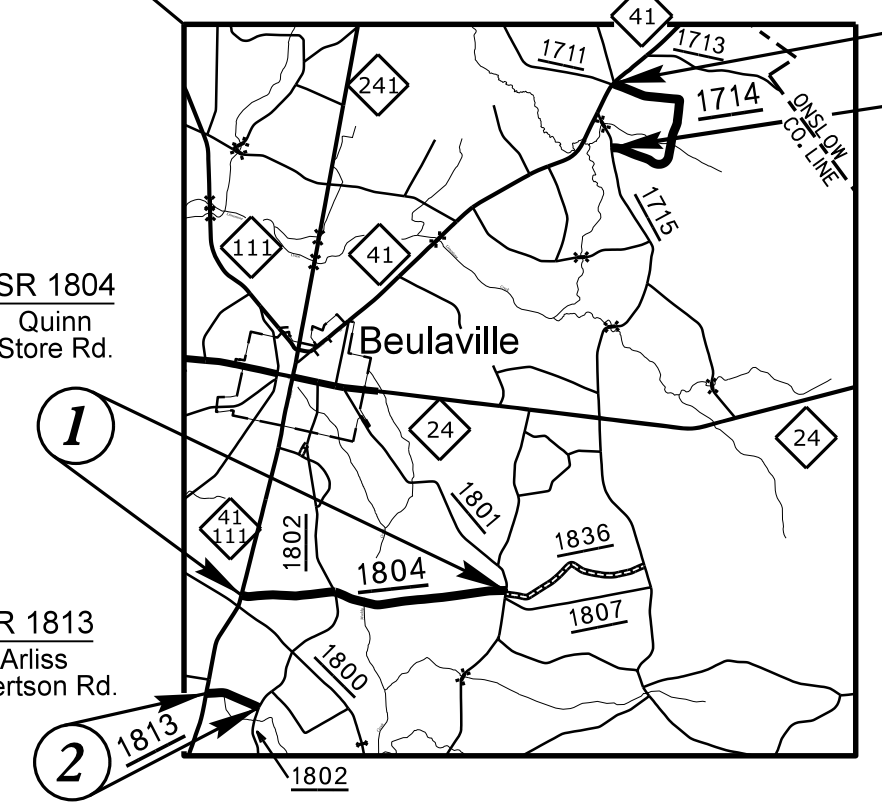
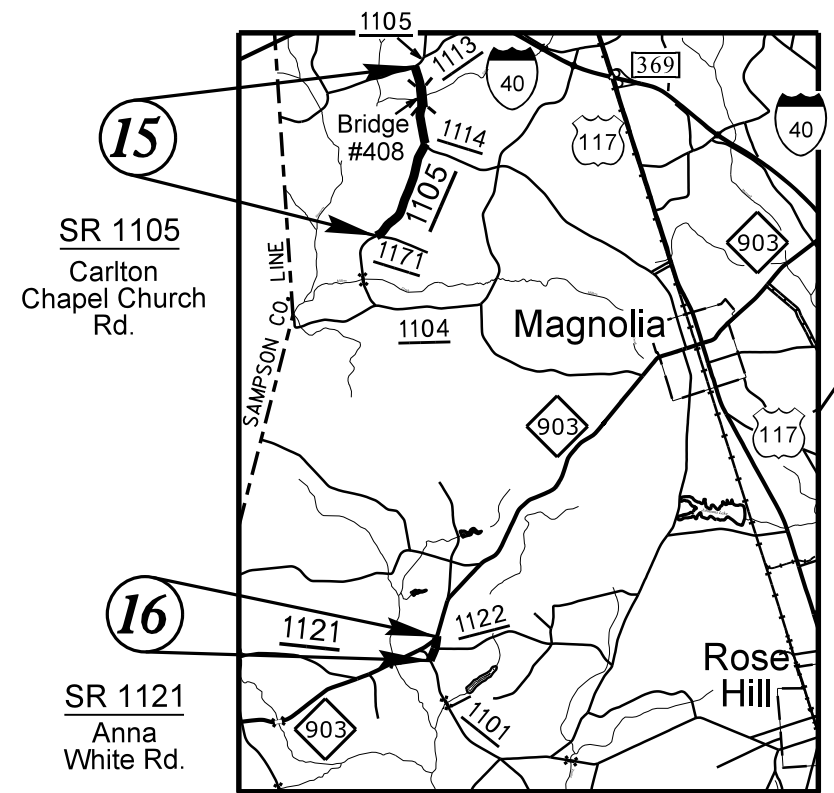
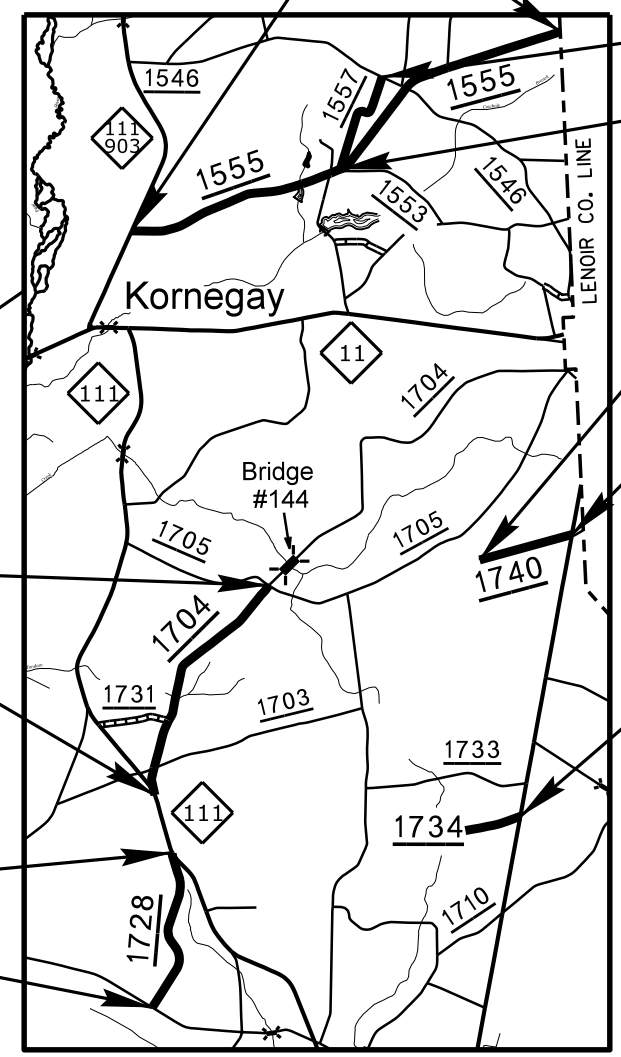
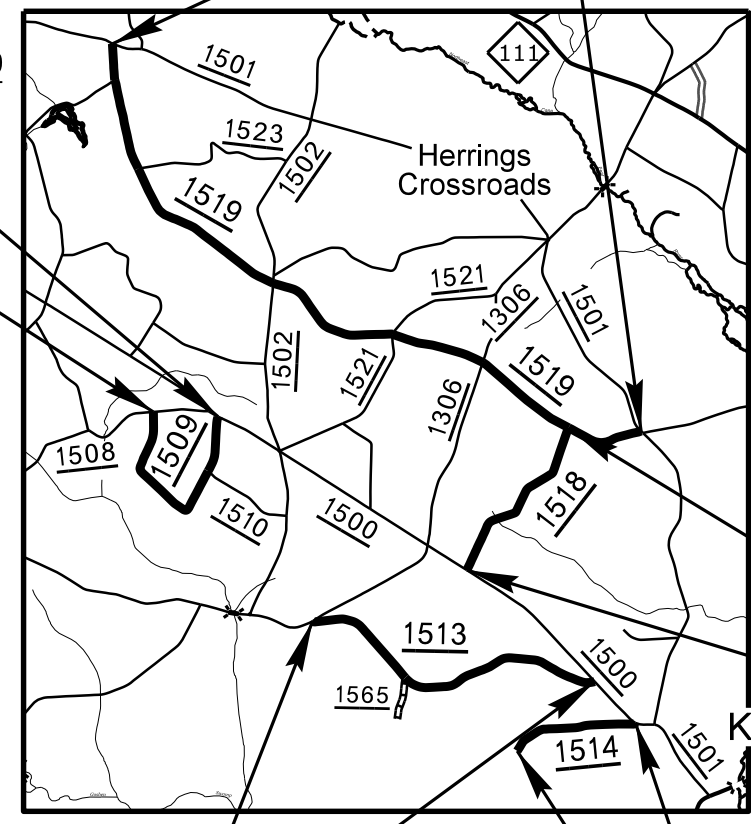
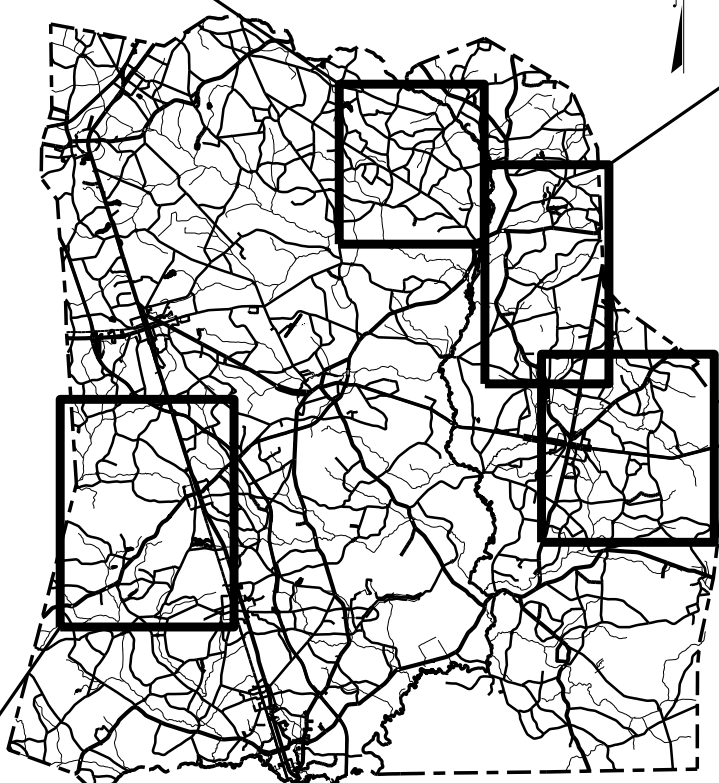


# DUPLIN COUNTY

TYPE OF WORK: ASPHALT SURFACE TREATMENT  
(DOUBLE SEAL), ETC.

LOCATION: 16 SECTIONS OF SECONDARY ROADS



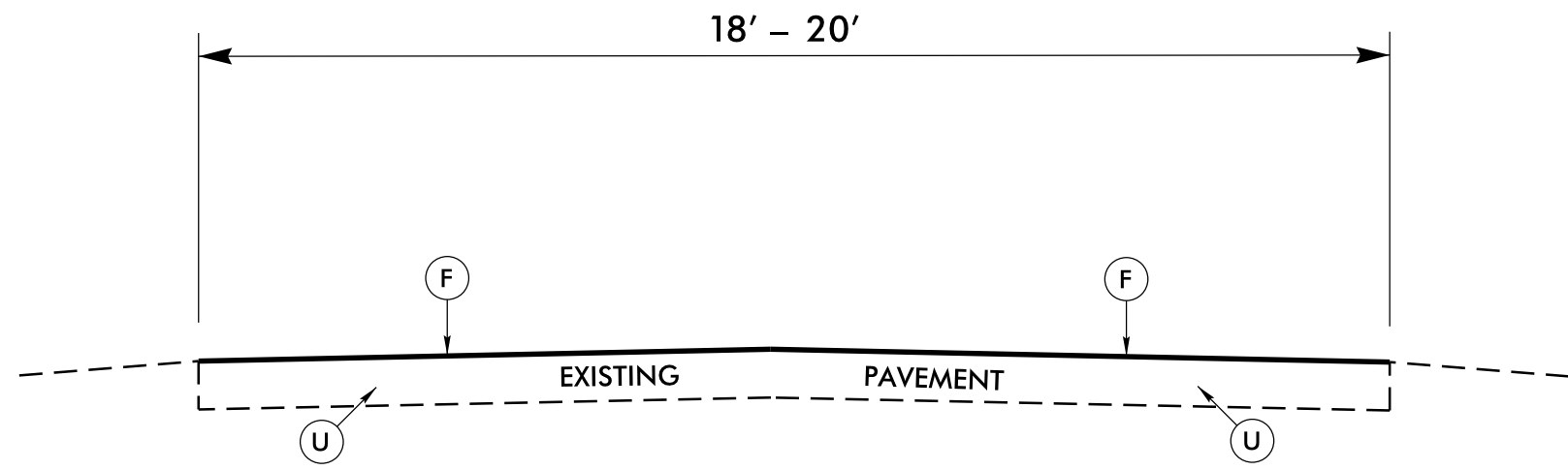
INDEX OF SHEETS	
SHEET NO.	SHEET
1	INDEX OF SHEETS & TITLE SHEET
2	PAVEMENT SCHEDULE, TYPICAL SECTION
3 & 4	SUMMARY OF QUANTITIES
5	TRAFFIC CONTROL DETAIL

MAPS N.T.S.

REVISIONS

I:\FEB-2016\_10-48  
 S:\Division\Resurfacing\System\_Preservation\2016\_Duplin\_Preservation\Jerr\2016CPT.03.27.20312\_TSH.dgn  
 8/17/99

REVISIONS  
 I2-FEB-2016 08:55  
 S:\Division\Resurfacing\System Preservation\2016 System Preservation\2016 Duplin Preservation\Jerril\2016CPT.03.27.20312\_TYP.dgn  
 \$\$\$USERNAME\$\$\$



**TYPICAL SECTION NO. 1**

DUPLIN CO.:  
 MAP NOS. 1 - 16  
  
 SR 1804, 1813, 1714, 1734, 1728, 1740,  
 1704, 1555, 1514, 1513, 1518, 1519, 1557,  
 1509, 1105, 1121  
  
NO DOUBLE SEAL WORK:  
 DUPLIN BRIDGE #408  
 MAP 15 - SR 1105 (CARLTON CHAPEL CHURCH RD.)

PAVEMENT SCHEDULE	
F	ASPHALT SURFACE TREATMENT, DOUBLE SEAL AGGREGATE: TOP $\frac{5}{16}$ " LW, BOTTOM 78M (GRANITE)
U	EXISTING PAVEMENT

**NOT TO SCALE**

PROJECT NO.	SHEET NO.
2016CPT.03.27.20312	3

### SUMMARY OF QUANTITIES

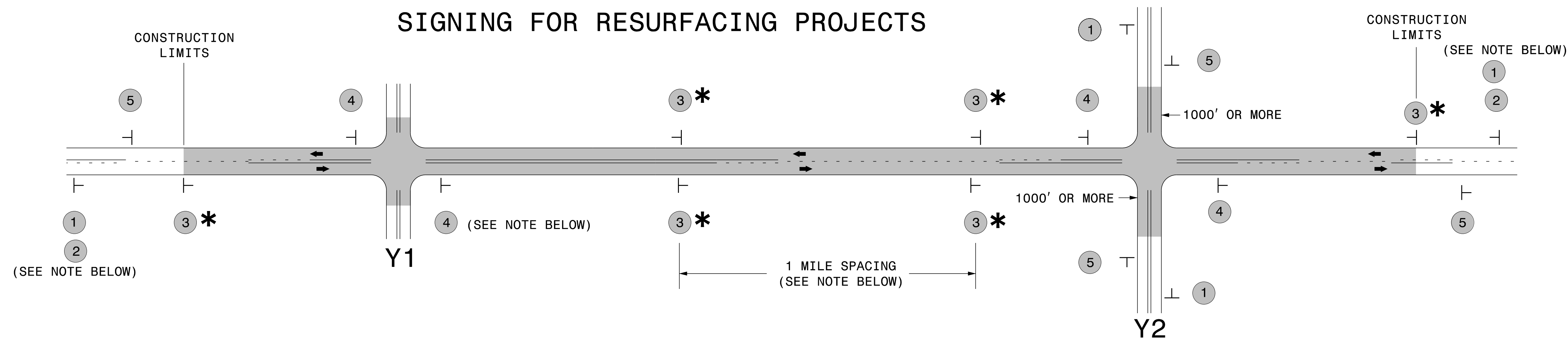
PROJECT NO	COUNTY	MAP NO	ROUTE	DESCRIPTION	TYP	LANES	LANE TYPE	FINAL SURFACE TESTING REQUIRED	WARM MIX ASPHALT REQUIRED	LENGTH MI	WIDTH FT	ASPHALT SURFACE TREATMENT, DOUBLE SEAL SY	EMULSION FOR ASPHALT SURFACE TREATMENT GAL
2016CPT.03.27.20312	DUPLIN	1	SR 1804 (QUINN STORE RD)	FROM NC 41 TO SR 1801 (MP 0.000 TO MP 2.967)	1	2	2WU	NO	NO	2.967	18 - 20	34,102	18,760
<b>TOTAL FOR MAP NO. 1</b>										<b>2.967</b>		<b>34,102</b>	<b>18,760</b>
2016CPT.03.27.20312	DUPLIN	2	SR 1813 (ARLISS ALBERTSON RD)	FROM NC 41 TO SR 1802 (MP 0.000 TO MP 0.614)	1	2	2WU	NO	NO	0.614	20	7,638	4,205
<b>TOTAL FOR MAP NO. 2</b>										<b>0.614</b>		<b>7,638</b>	<b>4,205</b>
2016CPT.03.27.20312	DUPLIN	3	SR 1714 (POTTERS HILL LOOP RD)	FROM NC 41 TO SR 1715 (MP 0.000 TO MP 2.110)	1	2	2WU	NO	NO	2.11	20	25,995	14,300
<b>TOTAL FOR MAP NO. 3</b>										<b>2.11</b>		<b>25,995</b>	<b>14,300</b>
2016CPT.03.27.20312	DUPLIN	4	SR 1734 (MIDWAY COURT RD)	FROM NC 241 TO END MAINTENANCE (MP 0.000 TO MP 0.520)	1	2	2WU	NO	NO	0.52	18	5,766	3,175
<b>TOTAL FOR MAP NO. 4</b>										<b>0.52</b>		<b>5,766</b>	<b>3,175</b>
2016CPT.03.27.20312	DUPLIN	5	SR 1728 (HALL RD)	FROM SR 1700 TO NC 111 (MP 0.000 TO MP 1.530)	1	2	2WU	NO	NO	1.53	20	18,850	10,370
<b>TOTAL FOR MAP NO. 5</b>										<b>1.53</b>		<b>18,850</b>	<b>10,370</b>
2016CPT.03.27.20312	DUPLIN	6	SR 1740 (PARKER HEATH RD)	FROM NC 241 TO END MAINTENANCE (MP 0.000 TO MP 0.870)	1	2	2WU	NO	NO	0.87	20	10,718	5,895
<b>TOTAL FOR MAP NO. 6</b>										<b>0.87</b>		<b>10,718</b>	<b>5,895</b>
2016CPT.03.27.20312	DUPLIN	7	SR 1704 (KITTY NOECKER RD)	FROM SR 1705 TO NC 111 (MP 0.000 TO MP 6.190)	1	2	2WU	NO	NO	6.19	18 - 20	71,468	39,310
<b>TOTAL FOR MAP NO. 7</b>										<b>6.19</b>		<b>71,468</b>	<b>39,310</b>
2016CPT.03.27.20312	DUPLIN	8	SR 1555 (SETH TURNER RD)	FROM NC 111 TO LENOIR COUNTY LINE (MP 0.000 TO MP 4.470)	1	2	2WU	NO	NO	4.47	18	49,563	27,260
<b>TOTAL FOR MAP NO. 8</b>										<b>4.47</b>		<b>49,563</b>	<b>27,260</b>
2016CPT.03.27.20312	DUPLIN	9	SR 1514 (KATOR DUNN RD)	FROM SR 1500 TO END MAINTENANCE (MP 0.000 TO MP 1.099)	1	2	2WU	NO	NO	1.099	20	13,552	7,455
<b>TOTAL FOR MAP NO. 9</b>										<b>1.099</b>		<b>13,552</b>	<b>7,455</b>
2016CPT.03.27.20312	DUPLIN	10	SR 1513 (ALUM SPRINGS RD)	FROM SR 1306 TO SR 1500 (MP 0.000 TO MP 2.780)	1	2	2WU	NO	NO	2.78	20	34,250	18,840
<b>TOTAL FOR MAP NO. 10</b>										<b>2.78</b>		<b>34,250</b>	<b>18,840</b>
2016CPT.03.27.20312	DUPLIN	11	SR 1518 (POPEYE RD)	FROM SR 1519 TO SR 1500 (MP 0.000 TO MP 1.590)	1	2	2WU	NO	NO	1.59	20	19,589	10,775
<b>TOTAL FOR MAP NO. 11</b>										<b>1.59</b>		<b>19,589</b>	<b>10,775</b>
2016CPT.03.27.20312	DUPLIN	12	SR 1519 (WHITE FLASH RD)	FROM SR 1501 TO SR 1501 (MP 0.000 TO MP 6.290)	1	2	2WU	NO	NO	6.29	18 - 20	74,031	40,725
<b>TOTAL FOR MAP NO. 12</b>										<b>6.29</b>		<b>74,031</b>	<b>40,725</b>
2016CPT.03.27.20312	DUPLIN	13	SR 1557 (SOUTHERLAND RD)	FROM SR 1555 TO SR 1546 (MP 0.000 TO MP 0.983)	1	2	2WU	NO	NO	0.983	20	12,197	6,710
<b>TOTAL FOR MAP NO. 13</b>										<b>0.983</b>		<b>12,197</b>	<b>6,710</b>
2016CPT.03.27.20312	DUPLIN	14	SR 1509 (CARTER THIGPEN RD)	FROM SR 1500 TO SR 1508 (MP 0.000 TO MP 1.920)	1	2	2WU	NO	NO	1.92	20	23,654	13,010
<b>TOTAL FOR MAP NO. 14</b>										<b>1.92</b>		<b>23,654</b>	<b>13,010</b>
2016CPT.03.27.20312	DUPLIN	15	SR 1105 (CARLTON CHAPEL CHURCH RD)	FROM SR 1112 TO SR 1171 (MP 3.618 TO MP 6.028) NO DOUBLE SEAL WORK ON DUPLIN BRIDGE # 408	1	2	2WU	NO		2.41	18 - 20	28,435	15,645
<b>TOTAL FOR MAP NO. 15</b>										<b>2.41</b>		<b>28,435</b>	<b>15,645</b>
2016CPT.03.27.20312	DUPLIN	16	SR 1121 (ANNA WHITE RD)	FROM NC 903 TO SR 1101 (MP 0.000 TO MP 0.320)	1	2	2WU	NO	NO	0.32	20	3,942	2,170
<b>TOTAL FOR MAP NO. 16</b>										<b>0.32</b>		<b>3,942</b>	<b>2,170</b>
<b>TOTAL FOR PROJ NO. 2016CPT.03.27.20312</b>										<b>36.663</b>		<b>433,750</b>	<b>238,605</b>
<b>GRAND TOTAL</b>										<b>36.663</b>		<b>433,750</b>	<b>238,605</b>

PROJECT NO.	SHEET NO.
2016CPT.03.27.20312	4

**THERMOPLASTIC AND PAINT QUANTITIES**

PROJECT NO	COUNTY	MAP NO	ROUTE	DESCRIPTION	TYP	LANES	LANE TYPE	LENGTH	WIDTH	441300000-E	445700000-N	481000000-E		490000000-N	
										WORK ZONE ADVANCE/GENERAL WARNING SIGNING SF	TEMPORARY TRAFFIC CONTROL LS	4" WHITE PAINT LF	4" YELLOW PAINT LF	YELLOW & YELLOW MARKERS EA	
2016CPT.03.27.20312	DUPLIN	1	SR 1804 (QUINN STORE RD)	FROM NC 41 TO SR 1801 (MP 0.000 TO MP 2.967)	1	2	2WU	2.967	18 - 20	208	0.08	62,663	39,164	196	
<b>TOTAL FOR MAP NO. 1</b>										<b>208</b>	<b>0.08</b>	<b>62,663</b>	<b>39,164</b>	<b>196</b>	
2016CPT.03.27.20312	DUPLIN	2	SR 1813 (ARLISS ALBERTSON RD)	FROM NC 41 TO SR 1802 (MP 0.000 TO MP 0.614)	1	2	2WU	0.614	20	96	0.02	12,968	8,105	41	
<b>TOTAL FOR MAP NO. 2</b>										<b>96</b>	<b>0.02</b>	<b>12,968</b>	<b>8,105</b>	<b>41</b>	
2016CPT.03.27.20312	DUPLIN	3	SR 1714 (POTTERS HILL LOOP RD)	FROM NC 41 TO SR 1715 (MP 0.000 TO MP 2.110)	1	2	2WU	2.11	20	128	0.06	44,563	27,852	139	
<b>TOTAL FOR MAP NO. 3</b>										<b>128</b>	<b>0.06</b>	<b>44,563</b>	<b>27,852</b>	<b>139</b>	
2016CPT.03.27.20312	DUPLIN	4	SR 1734 (MIDWAY COURT RD)	FROM NC 241 TO END MAINTENANCE (MP 0.000 TO MP 0.520)	1	2	2WU	0.52	18	96	0.01	10,982	6,864	34	
<b>TOTAL FOR MAP NO. 4</b>										<b>96</b>	<b>0.01</b>	<b>10,982</b>	<b>6,864</b>	<b>34</b>	
2016CPT.03.27.20312	DUPLIN	5	SR 1728 (HALL RD)	FROM SR 1700 TO NC 111 (MP 0.000 TO MP 1.530)	1	2	2WU	1.53	20	128	0.04	32,314	20,196	101	
<b>TOTAL FOR MAP NO. 5</b>										<b>128</b>	<b>0.04</b>	<b>32,314</b>	<b>20,196</b>	<b>101</b>	
2016CPT.03.27.20312	DUPLIN	6	SR 1740 (PARKER HEATH RD)	FROM NC 241 TO END MAINTENANCE (MP 0.000 TO MP 0.870)	1	2	2WU	0.87	20	96	0.02	18,374	11,484	57	
<b>TOTAL FOR MAP NO. 6</b>										<b>96</b>	<b>0.02</b>	<b>18,374</b>	<b>11,484</b>	<b>57</b>	
2016CPT.03.27.20312	DUPLIN	7	SR 1704 (KITTY NOECKER RD)	FROM SR 1705 TO NC 111 (MP 0.000 TO MP 6.190)	1	2	2WU	6.19	18 - 20	336	0.17	130,733	81,708	409	
<b>TOTAL FOR MAP NO. 7</b>										<b>336</b>	<b>0.17</b>	<b>130,733</b>	<b>81,708</b>	<b>409</b>	
2016CPT.03.27.20312	DUPLIN	8	SR 1555 (SETH TURNER RD)	FROM NC 111 TO LENOIR COUNTY LINE (MP 0.000 TO MP 4.470)	1	2	2WU	4.47	18	288	0.12	94,406	59,004	295	
<b>TOTAL FOR MAP NO. 8</b>										<b>288</b>	<b>0.12</b>	<b>94,406</b>	<b>59,004</b>	<b>295</b>	
2016CPT.03.27.20312	DUPLIN	9	SR 1514 (KATOR DUNN RD)	FROM SR 1500 TO END MAINTENANCE (MP 0.000 TO MP 1.099)	1	2	2WU	1.099	20	96	0.03	23,211	14,507	73	
<b>TOTAL FOR MAP NO. 9</b>										<b>96</b>	<b>0.03</b>	<b>23,211</b>	<b>14,507</b>	<b>73</b>	
2016CPT.03.27.20312	DUPLIN	10	SR 1513 (ALUM SPRINGS RD)	FROM SR 1306 TO SR 1500 (MP 0.000 TO MP 2.780)	1	2	2WU	2.78	20	160	0.08	58,714	36,696	183	
<b>TOTAL FOR MAP NO. 10</b>										<b>160</b>	<b>0.08</b>	<b>58,714</b>	<b>36,696</b>	<b>183</b>	
2016CPT.03.27.20312	DUPLIN	11	SR 1518 (POPEYE RD)	FROM SR 1519 TO SR 1500 (MP 0.000 TO MP 1.590)	1	2	2WU	1.59	20	96	0.04	33,581	20,988	105	
<b>TOTAL FOR MAP NO. 11</b>										<b>96</b>	<b>0.04</b>	<b>33,581</b>	<b>20,988</b>	<b>105</b>	
2016CPT.03.27.20312	DUPLIN	12	SR 1519 (WHITE FLASH RD)	FROM SR 1501 TO SR 1501 (MP 0.000 TO MP 6.290)	1	2	2WU	6.29	18 - 20	496	0.16	132,845	83,028	414	
<b>TOTAL FOR MAP NO. 12</b>										<b>496</b>	<b>0.16</b>	<b>132,845</b>	<b>83,028</b>	<b>414</b>	
2016CPT.03.27.20312	DUPLIN	13	SR 1557 (SOUTHERLAND RD)	FROM SR 1555 TO SR 1546 (MP 0.000 TO MP 0.983)	1	2	2WU	0.983	20	96	0.03	20,761	12,976	65	
<b>TOTAL FOR MAP NO. 13</b>										<b>96</b>	<b>0.03</b>	<b>20,761</b>	<b>12,976</b>	<b>65</b>	
2016CPT.03.27.20312	DUPLIN	14	SR 1509 (CARTER THIGPEN RD)	FROM SR 1500 TO SR 1508 (MP 0.000 TO MP 1.920)	1	2	2WU	1.92	20	160	0.05	40,550	25,344	127	
<b>TOTAL FOR MAP NO. 14</b>										<b>160</b>	<b>0.05</b>	<b>40,550</b>	<b>25,344</b>	<b>127</b>	
2016CPT.03.27.20312	DUPLIN	15	SR 1105 (CARLTON CHAPEL CHURCH RD)	FROM SR 1112 TO SR 1171 (MP 3.618 TO MP 6.028) NO DOUBLE SEAL WORK ON DUPLIN BRIDGE # 408	1	2	2WU	2.41	18 - 20	208	0.07	50,899	31,812	159	
<b>TOTAL FOR MAP NO. 15</b>										<b>208</b>	<b>0.07</b>	<b>50,899</b>	<b>31,812</b>	<b>159</b>	
2016CPT.03.27.20312	DUPLIN	16	SR 1121 (ANNA WHITE RD)	FROM NC 903 TO SR 1101 (MP 0.000 TO MP 0.320)	1	2	2WU	0.32	20	96	0.02	6,758	4,224	21	
<b>TOTAL FOR MAP NO. 16</b>										<b>96</b>	<b>0.02</b>	<b>6,758</b>	<b>4,224</b>	<b>21</b>	
<b>TOTAL FOR PROJ NO. 2016CPT.03.27.20312</b>										<b>36,663</b>	<b>2,784</b>	<b>1</b>	<b>774,322</b>	<b>483,952</b>	<b>2,419</b>
<b>GRAND TOTAL</b>													<b>1,258,274</b>		
										<b>36,663</b>	<b>2,784</b>	<b>1</b>	<b>774,322</b>	<b>483,952</b>	<b>2,419</b>
													<b>1,258,274</b>		

## SIGNING FOR RESURFACING PROJECTS



LEGEND	
	STATIONARY SIGN
←	DIRECTION OF TRAFFIC FLOW

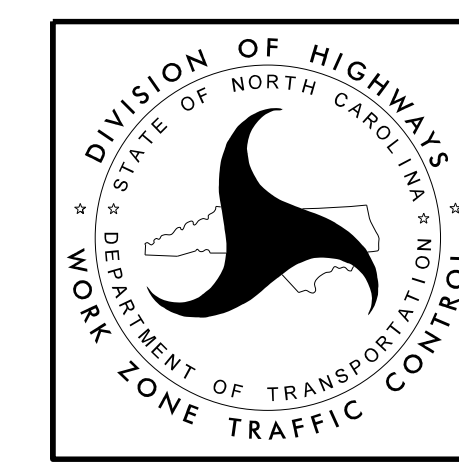
### MAINLINE (-L-) SIGNING

### -Y- LINE SIGNING

<b>SIGNING NOTES AND PLACEMENT PER DIRECTION</b>	1	 <small>W20-1 48" X 48"</small>	PLACE 1000' PRIOR TO BEGINNING OF CONSTRUCTION LIMITS. ONLY USED ON -Y- LINES IF RESURFACING LIMITS EXTEND 1000' ALONG -Y- LINE.		
	2	 <small>W7-3aP 24" X 18"</small>	#2 SIGN ONLY USED WHEN RESURFACING LIMITS ARE 2 OR MORE MILES IN LENGTH. ROUND UP TO NEXT WHOLE NUMBER. (NO FRACTIONAL OR DECIMAL NUMBERS)		
	3 *	 <small>SP 13107 48" X 48"</small>	PLACE INITIALLY AT THE CONSTRUCTION LIMITS AND SPACED 1 MILE APART THEREAFTER. IF NO -Y- LINES EXIST, PLACE 2ND SET 1/2 MILE FROM THE CONSTRUCTION LIMITS AND THEN SPACE 1 MILE THEREAFTER.		
	4	 <small>SP 13106 48" X 48"</small>	THESE ARE FOR -Y- LINES THAT ARE "THROUGH" ROADWAYS. DEAD END AND SUBDIVISION ROADS ARE NOT "THROUGH" ROADWAYS. INSTALL 500' +/- FROM EACH -Y- LINE APPROACH AS SHOWN ABOVE. FOR MULTIPLE -Y- LINES THAT ARE SEPARATED BY 0.25 MILES OR LESS, TREAT AS A SINGLE UNIT AND INSTALL WITHIN 500' OF EACH APPROACH. A MAXIMUM OF 2 SIGN SETS PER MILE. DO NOT INSTALL WHEN -Y- LINES ARE WITHIN 0.5 MILES FROM "END ROAD WORK" SIGN.		
5	 <small>G20-2 A 48" X 24"</small>	PLACE 500' FOLLOWING THE END OF CONSTRUCTION LIMITS.	<p style="text-align: center;"><b>NO REQUIRED STATIONARY SIGNING FOR THE FOLLOWING -Y- LINE CONDITIONS:</b></p> <ol style="list-style-type: none"> <li>1) LESS THAN 1000' OF RESURFACING ALONG -Y- LINE</li> <li>2) SUBDIVISION ROADS</li> <li>3) DEAD END ROADS</li> </ol> <p style="text-align: center;">WHEN PAVING/CONSTRUCTION ACTIVITIES PROCEED ACROSS AN UNSIGNED -Y- LINE, ADVANCE WARNING PORTABLE SIGNS SHALL BE USED ALONG THE -Y- LINE AS SHOWN BELOW. REMOVE UPON COMPLETION OF WORK.</p> <div style="display: flex; justify-content: space-around; align-items: center;"> <div style="text-align: center;">   <small>W20-1 48" X 48"</small> </div> <div style="text-align: center;">   <small>W20-7 A 48" X 48"</small> </div> </div> <p style="text-align: center;">PLACED 500' IN ADVANCE OF FLAGGER. PLACED 250' IN ADVANCE OF FLAGGER.</p>		

### \* SIGNING FOR ASPHALT SURFACE TREATMENTS (ONLY)

SUBSTITUTE LOW/SOFT SHOULDER SIGNS BY ALTERNATING THE FOLLOWING TWO SIGNS:  
 STARTING WITH "UNMARKED PAVEMENT AHEAD" (SP 06026) FOLLOWED BY "LOOSE GRAVEL" (W8-7).



**RESURFACING  
ADVANCE WARNING SIGNS  
FOR  
RURAL AND SUBURBAN  
2 LANE ROADWAYS**

6/3/2014 S:\T\U\WZTC\Apps\WorkZoneGeneral\ExternalWebPage\DesRes\Resurfacing\Resurfacing\_AdvWarn\_2Ln.dgn User:rmgarr.eht